



SWANLAKE

El Gouna

A HASSAN ALLAM PROPERTIES DEVELOPMENT

Located in the Heart of El Gouna; a few minutes away from El Gouna's main hubs, Abu Tig Marina and its new extension, the New Marina and the Downtown Area, 25 Kilometers north of Hurghada, a four hour flight from Europe's major capitals.

LOCATION IN EL GOUNA



THE CLUBHOUSE RESTAURANT SPA

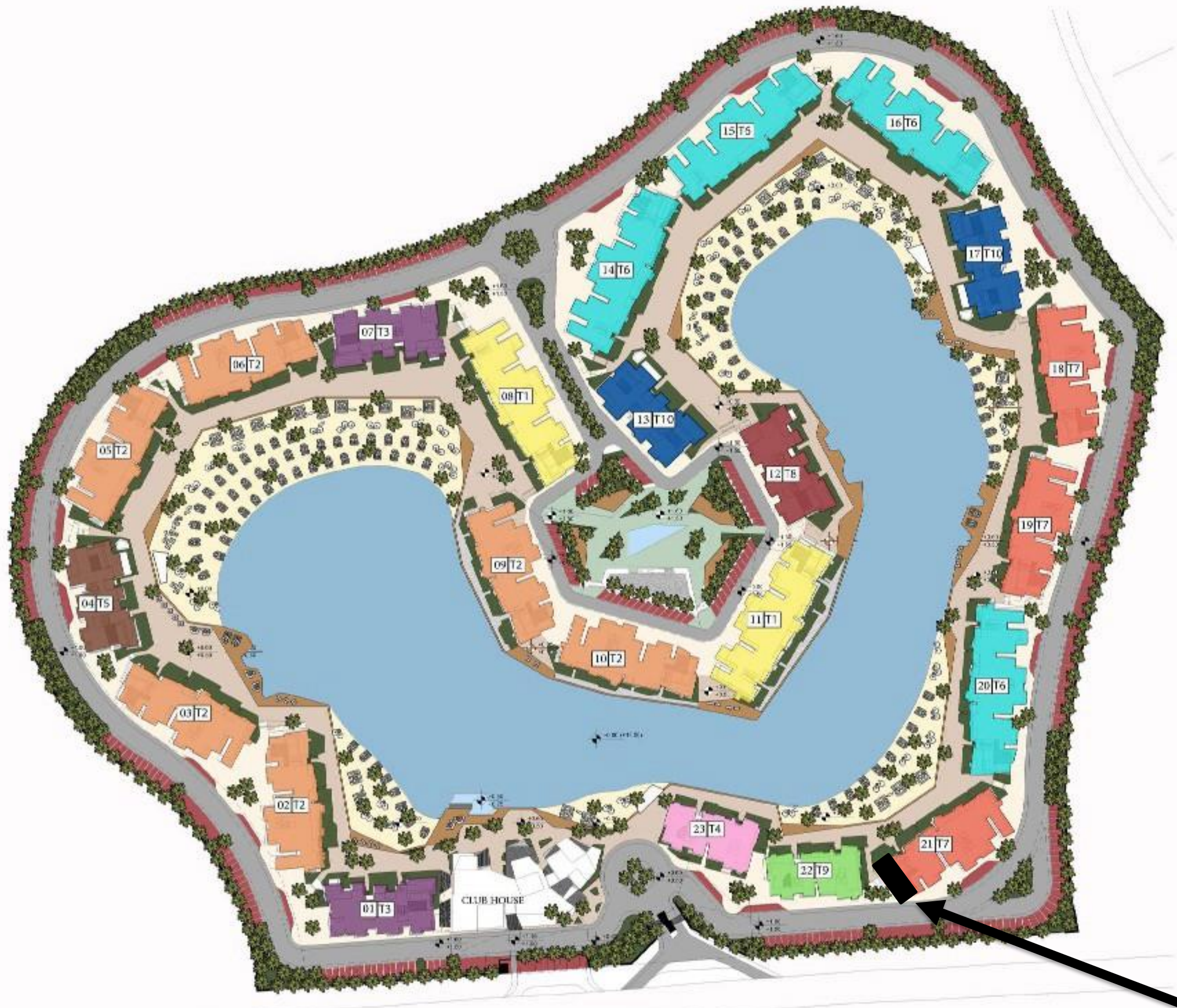
Because we want to ensure the comfort of our residents we have designed a clubhouse to cater the needs of our community. SwanLake El Gouna clubhouse is fully equipped with its own fitness club, Spa and Restaurant to bring all the essential facilities closer to your door step.





THE HEART
OF ELGOUNA



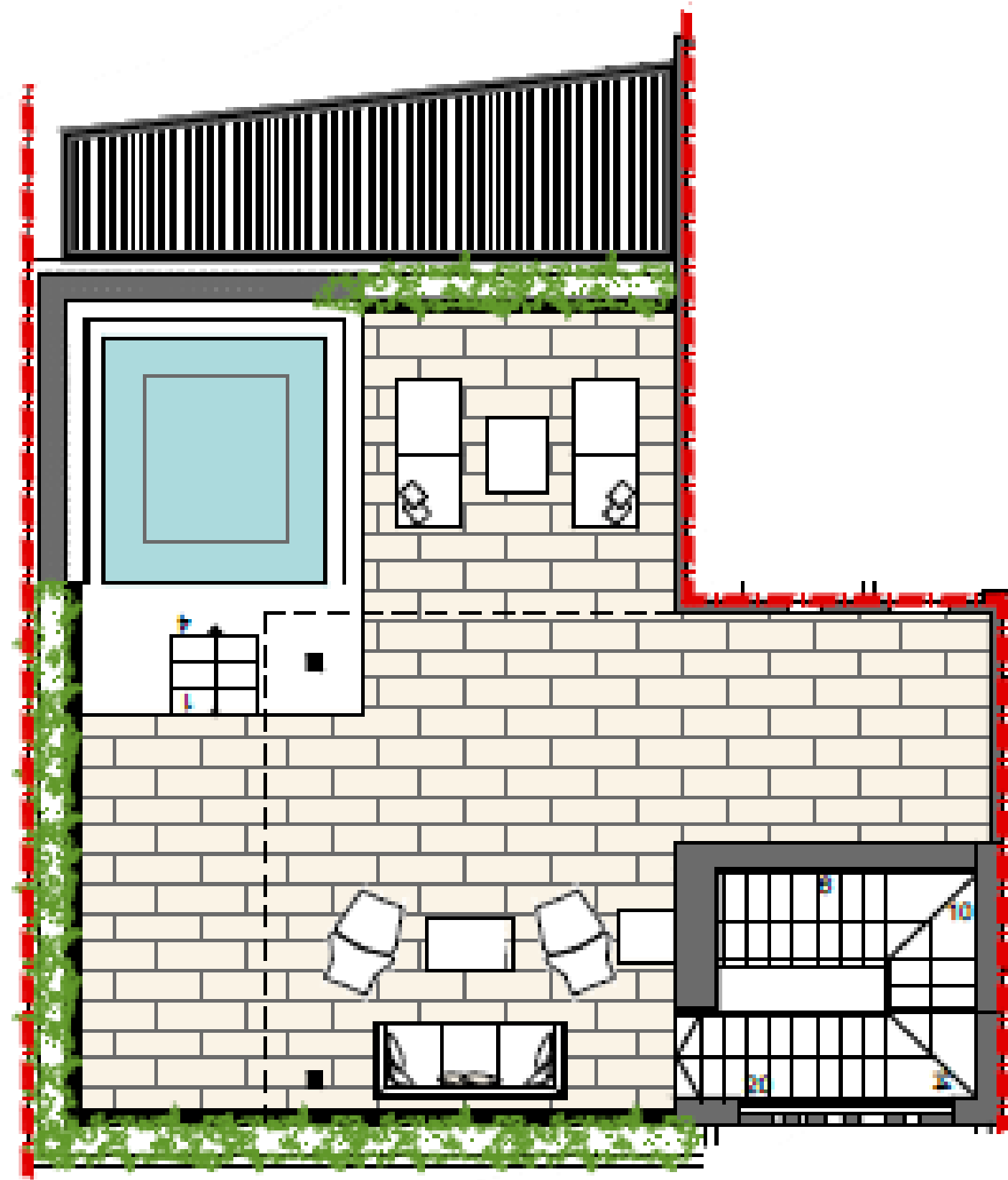
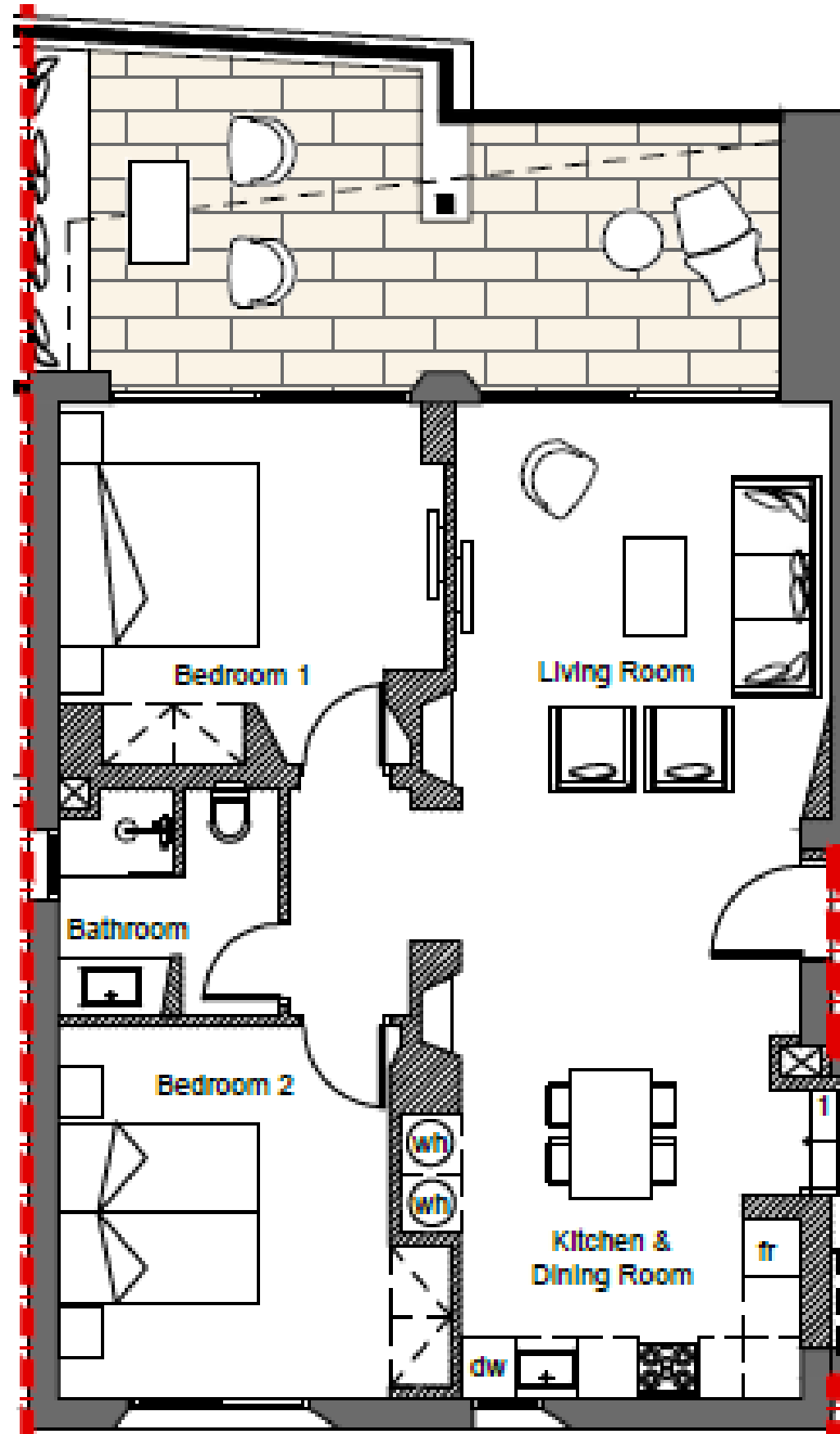


- TYPE 1
- TYPE 2
- TYPE 3
- TYPE 4
- TYPE 5
- TYPE 6
- TYPE 7
- TYPE 8
- TYPE 9
- TYPE 10
- CLUB HOUSE
- CRYSTAL LAGOON

MASTER PLAN

SLG-21-R-21

Type	3 Bedrooms + Roof
Area	151 Sqm + 69 Sqm
Floor	Second



Finished Mock-Up



Finished Mock-Up



Finished Mock-Up



Finished Mock-Up

